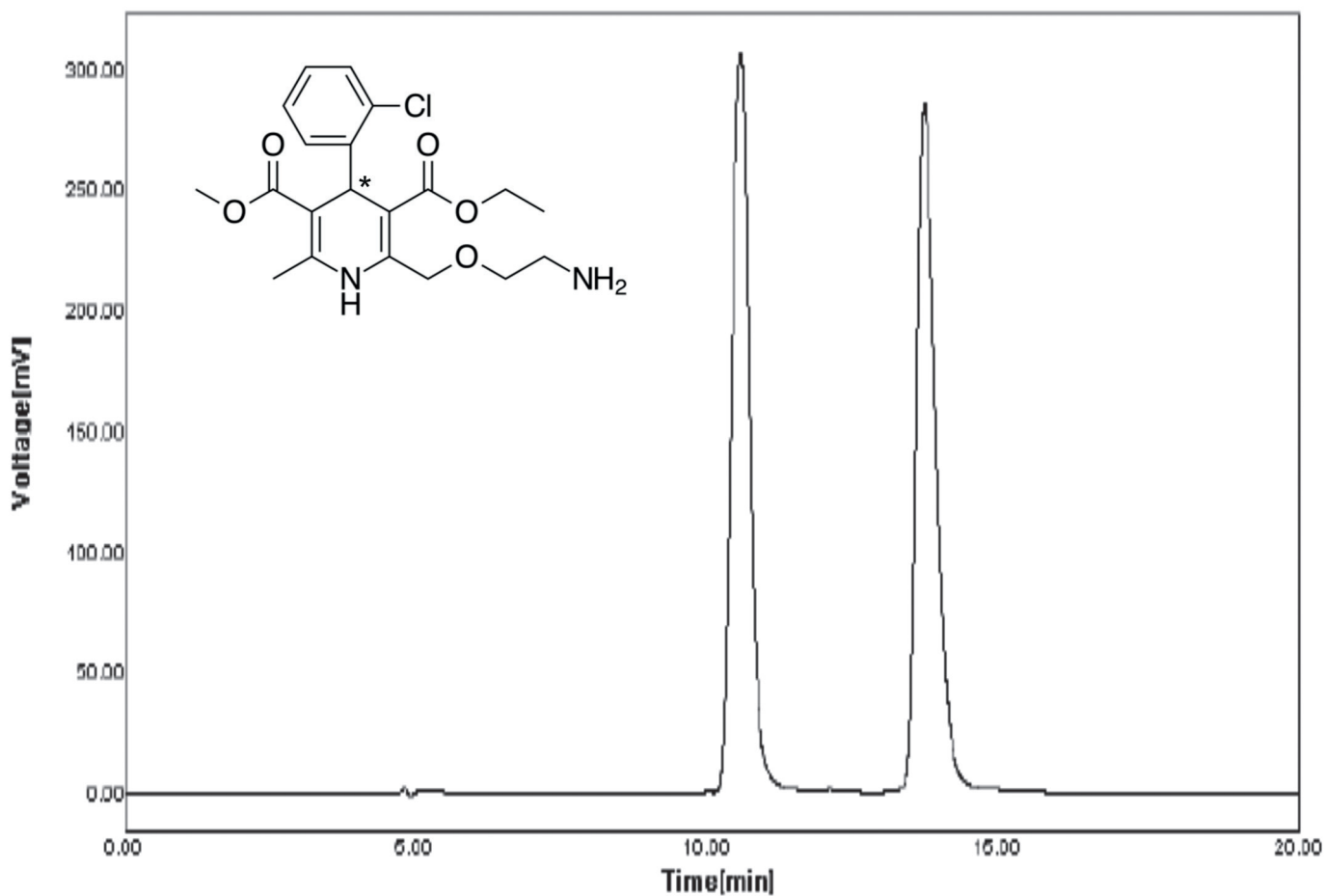


# Application Note

**YMC**  
EUROPE GMBH

Amlodipine\*\*



Column: CHIRAL ART Cellulose-SC 5  $\mu$ m (250 x 4.6 mm ID)  
Part No.: KSC99S05-2546WT  
Eluent: dichloromethane/acetonitrile/*n*-butylamine (90/10/0.1)  
Flow rate: 0.7 mL/min  
Temperature: 25°C  
Detection: UV at 360 nm  
Injection: 20  $\mu$ L (0.5 mg/mL)

\*\*Application data by courtesy YMC India Pvt. Ltd.