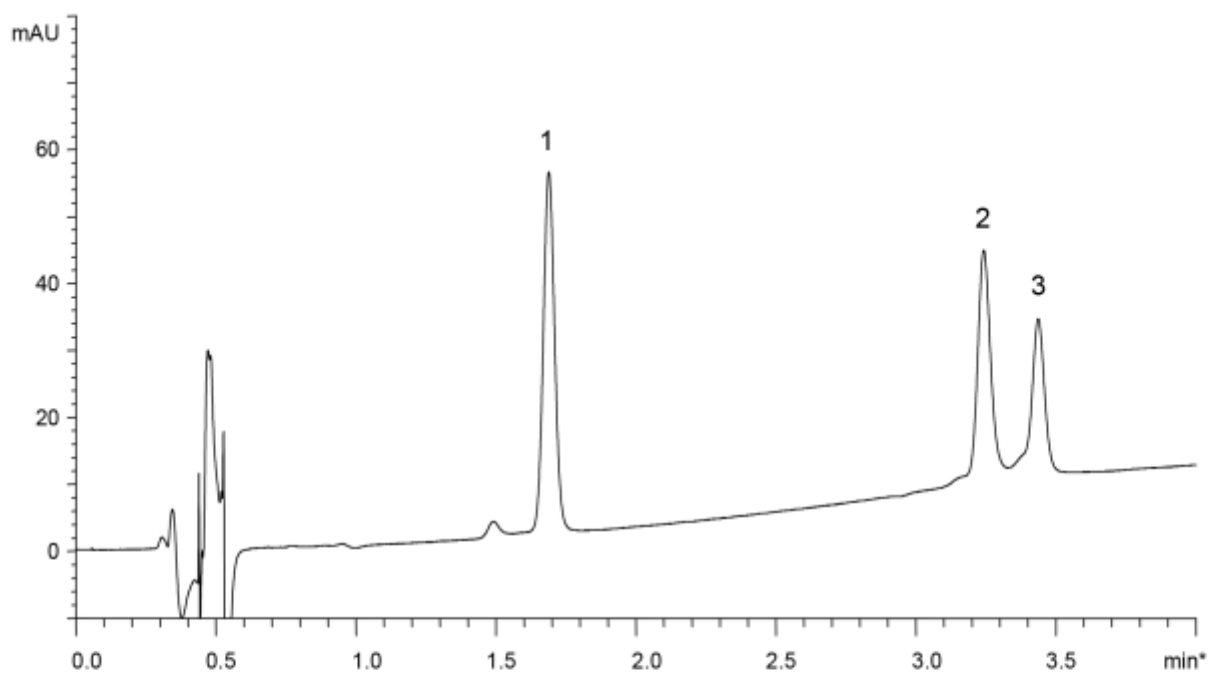


1. Lysozyme (MW 14,300)
2.  $\alpha$ -Chymotrypsinogen (MW 25,700)
3.  $\beta$ -Lactoglobulin A (MW 18,400)



Column : YMC-Triart C18 (1.9  $\mu$ m, 12 nm)  
50 X 2.0 mm I.D.

Eluent : A) water/TFA (100/0.1)  
B) acetonitrile/2-propanol/TFA (50/50/0.1)  
30-60%B (0-5 min)

Flow rate : 0.4 mL/min

Temperature : 70°C

Detection : UV at 220 nm

Injection : 1  $\mu$ L (250  $\mu$ g/mL)

Pressure : 27.4-28.4 MPa (3,970-4,120 psi)