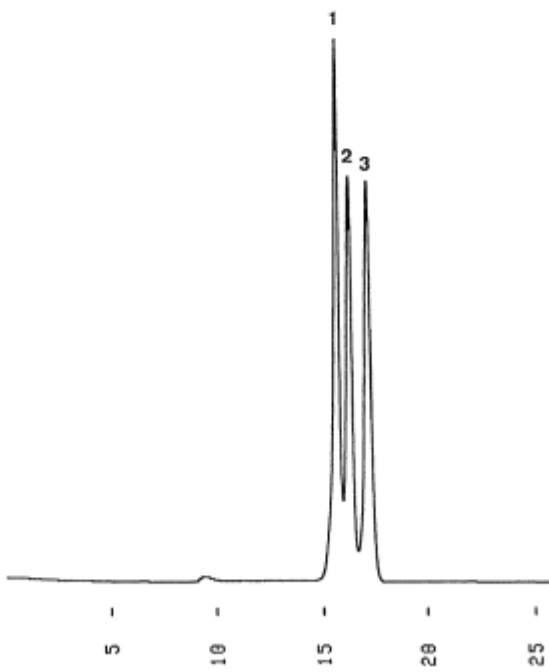


1. γ -Cyclodextrin
2. β -Cyclodextrin
3. α -Cyclodextrin



Column : YMC-Pack Diol-60
500 × 8.0 mm I.D.
Eluent : water
Flow rate : 1.0 mL/min
Temperature : ambient (24 °C)
Detection : RI, 32 × 10⁻⁶ RIU/FS
Injection : 30 μL (1.67 mg/mL)