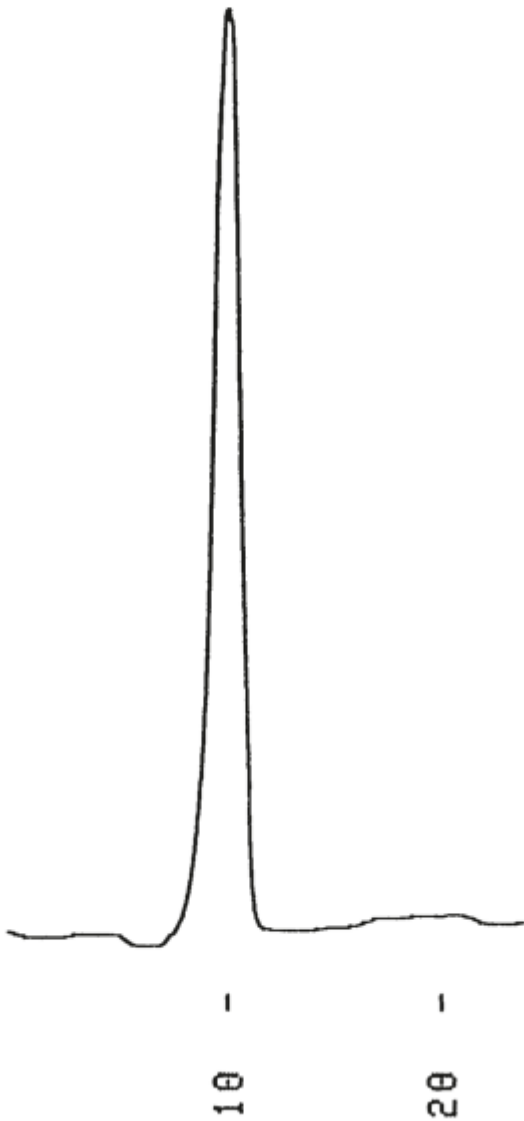


1.Chondroitin sulfate A, Na salt



Column : YMC-Pack Diol-300
500 × 8.0 mm I.D.

Eluent : water

Flow rate : 1.0 mL/min

Temperature : ambient (24 °C)

Detection : RI, 32×10^{-6} RIU/FS

Injection : 20 μ L (5.0 mg/mL)