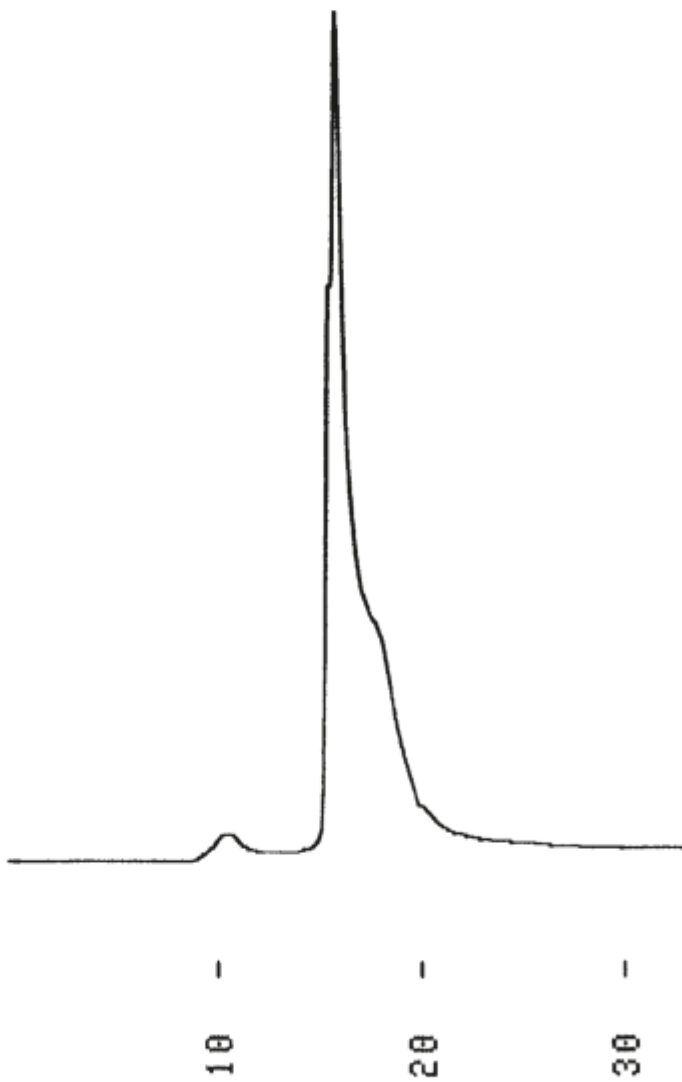


1. Casein



Column : YMC-Pack Diol-300  
500 × 8.0 mm I.D.  
Eluent : 0.1M KH<sub>2</sub>PO<sub>4</sub>-K<sub>2</sub>HPO<sub>4</sub> (pH 7.0) containing  
0.2M NaCl/acetonitrile (90/10)  
Flow rate : 1.0 mL/min  
Temperature : ambient (22 °C)  
Detectio : UV at 215 nm, 0.16 AUFS  
Injection : 15 μL (1.0 mg/mL)