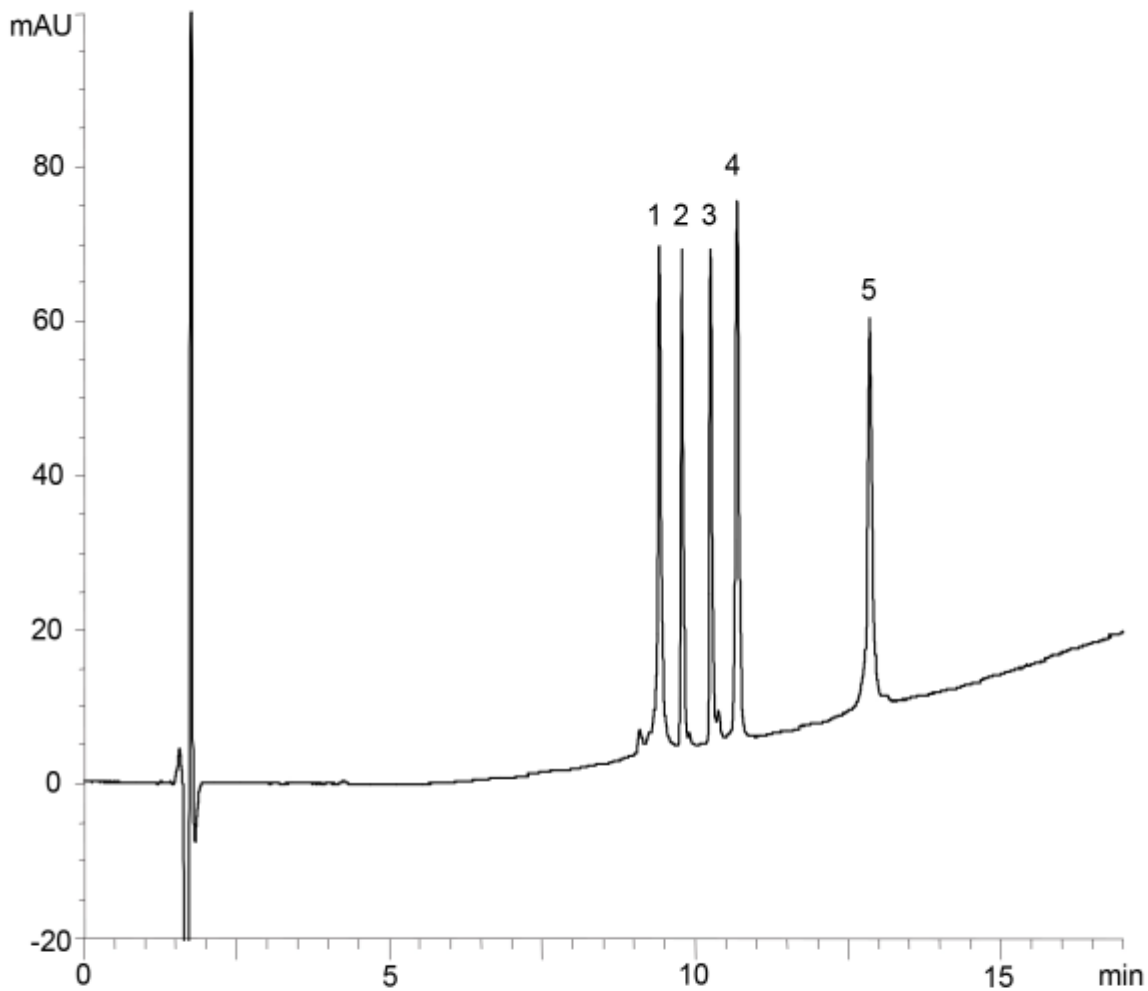


1. Cytochrome c (MW 12,400)
2. Insulin (MW 5,700)
3. Amyloid β protein (1-40) (MW 4,300)
4. Lysozyme (MW 14,000)
5. α -Chymotrypsinogen A (MW 25,700)



Column : Meteoric Core C18 BIO (2.7 μ m, 16 nm)
 150 X 2.1 mm I.D.
Eluent : A) water/TFA (100/0.1)
 B) acetonitrile/TFA (100/0.1)
 20-70%B (0-15 min), 70%B (15-17 min)
Flow rate : 0.2 mL/min
Temperature : 40°C
Detection : UV at 220 nm
Injection : 2 μ L (0.05-0.2 mg/mL)
Pressure : 12.8-16.1 MPa (1860-2330 psi)