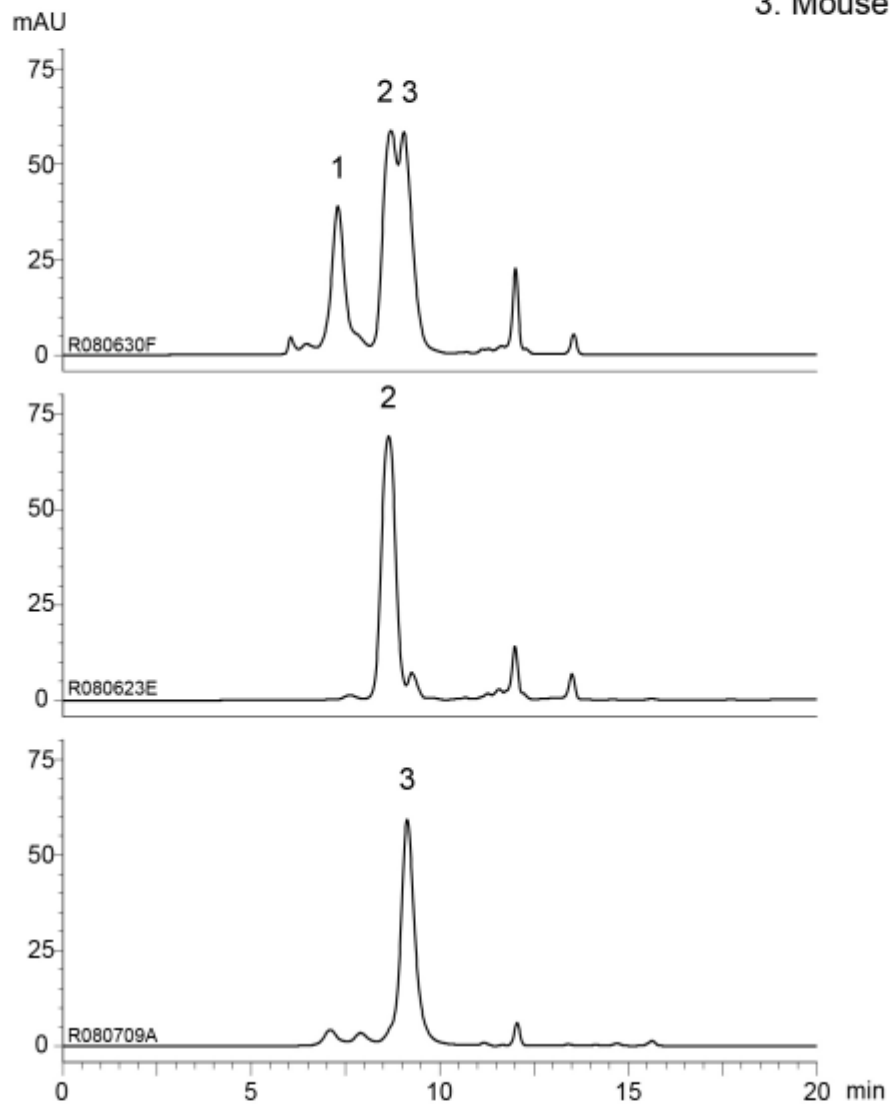


1. Rabbit IgG
2. Mouse IgG F(c) fragment
3. Mouse IgG Fab fragment



Column : YMC-Pack Diol-200
300 X 8.0 mmI.D.
Eluent : 0.1M KH₂PO₄-K₂HPO₄ (pH 6.9) containing 0.2M NaCl
Flow rate : 1.0 mL/min
Temperature : ambient (27°C)
Detection : UV at 220 nm
Injection : 5 μL (0.4, 0.5 mg/mL)