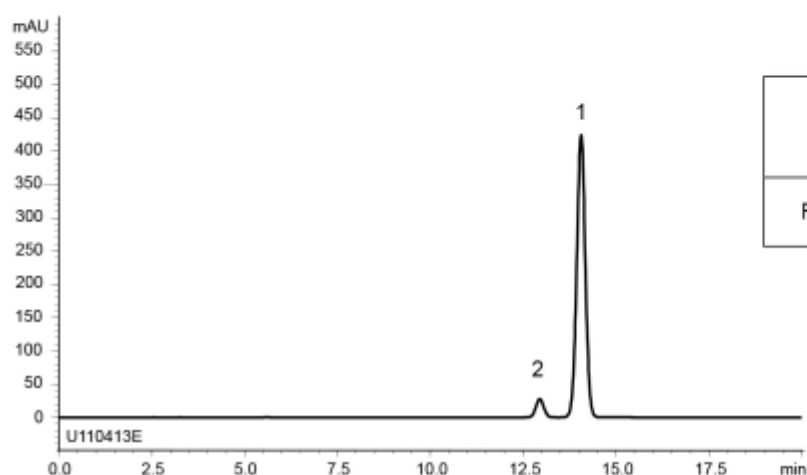
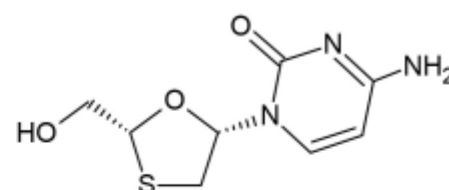


A) System suitability solution  
(0.25 mg/mL USP Lamivudine Resolution Mixture B)



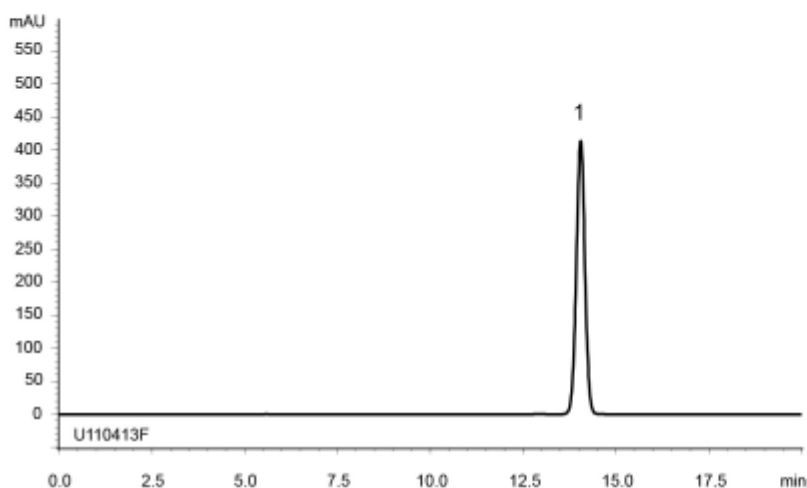
	System suitability requirement	result
Resolution (1,2)	$\geq 1.5$	2.72

1

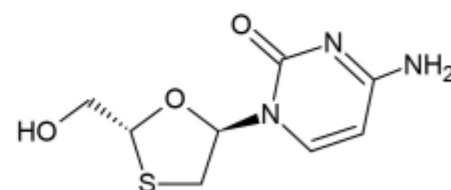


Lamivudine

B) Assay preparation  
(0.25 mg/mL Lamivudine)



2



Lamivudine diastereomer

Column	: YMC-Triart C18 (5 $\mu$ m, 12 nm) 250 X 4.6 mm I.D.
Eluent	: methanol/buffer* (5/95) *Dissolve 1.9 g of $\text{CH}_3\text{COONH}_4$ in 900 mL water, adjust pH 3.8 with $\text{CH}_3\text{COOH}$ and add water to make 1000 mL.
Flow rate	: 1.0 mL/min
Temperature	: 35°C
Detection	: UV at 277 nm
Injection	: 10 $\mu$ L
(The United States Pharmacopoeia 32nd; Assay)	